




Teensy Bat Detector: interface based on version 1.4

Current sample rate.
Has to be more than twice the value of max target frequency.

Temperature sensor display (*optional*).

Current GPS status (*optional*).

	No position acquired
	Position acquired, shows number of satellites in view (+ if > 9)
	Position lost recently

Current volume and gain.
AGC will be displayed when **Automatic Gain Control** is active.

Current time based on internal clock. Can be modified in settings or auto-set if GPS present.

Software High-pass status.
hi = high-pass is active
White bar extent indicates frequency threshold (here set to 12 kHz)

Min, Peak, and Max frequency of recent signals.

Power spectrum of recent signals

Frequency scale (marks every 10kHz).
Auto-scales according to sample rate.

Spectrogram of recent signals

Repeats at the bottom of the display.

Left Button (**L-Button**).

Default function: start/end recording.
When this button is pressed during startup it will reset settings to factory defaults.

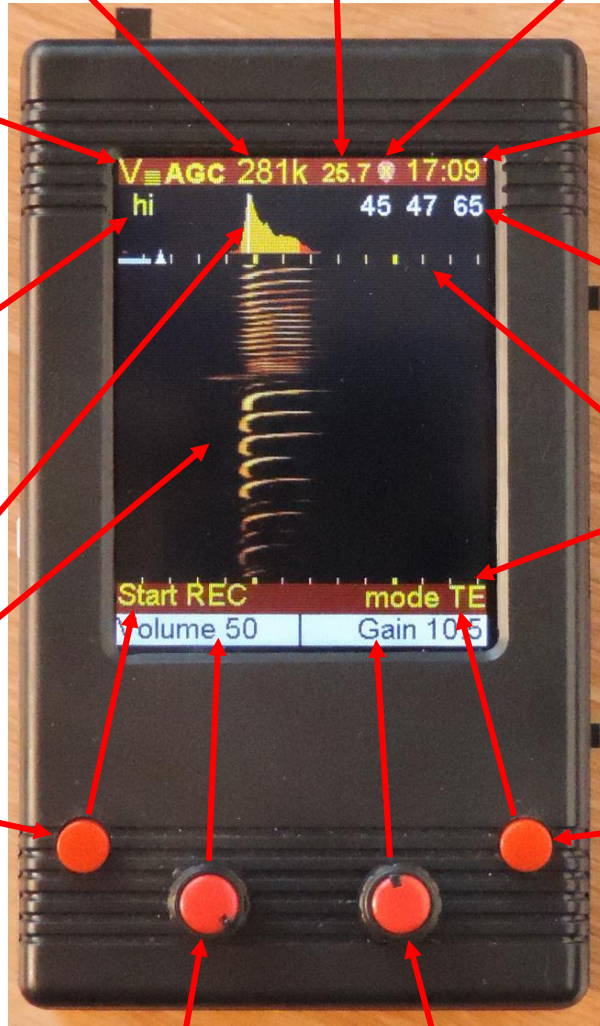
Right Button (**R-Button**).

Default function: cycle through listening modes.
When this button is pressed during startup the settings will be loaded from an SD card (if present).
Long press to write a screen capture to SD if card present.

Left encoder (**L-Enc**).
Default: Turn to change volume

Right encoder (**R-Enc**).
Default: Turn to change gain

The function of the encoders can be changed. To do this press the encoder to enter function change, then turn to select function and press the encoder again to activate function.



Teensy Bat Detector: Settings

Using the SETTINGS MENU

Press L-enc to set the L-Encoder to MENU_mode. Turn L-enc until it shows “SETTINGS” and press L_Enc again to select this option. The display will now show the **STARTUP DEFAULTS** settings page.

Once in the settings, rotate L-enc to highlight the option you want to change and then turn R-enc to change its value.

Accessing other pages:

Turn the L-enc until the page header (STARTUP DEFAULTS) is highlighted and then turn R-enc to cycle through other settings-pages.

Important note:

When finished changing settings, it is possible either:

- to simply exit the settings-menu (without saving) by pressing L-enc,
- or to save the changes by pressing the R-enc before exiting the settings-menu.

Exit without saving: changes are directly applied but will be kept only until the next power off.

When powering the device on again it will revert to the previous stored settings.

Save then exit: changes are applied and stored in EEPROM so they can stay in effect after powering off and on again.

If an SD card is present, settings will be written to a file on that SD card. You can keep a copy of that file (located in the root: TB_V13.cfg) on a computer for safekeeping. These configuration files can be shared between devices and with other users.

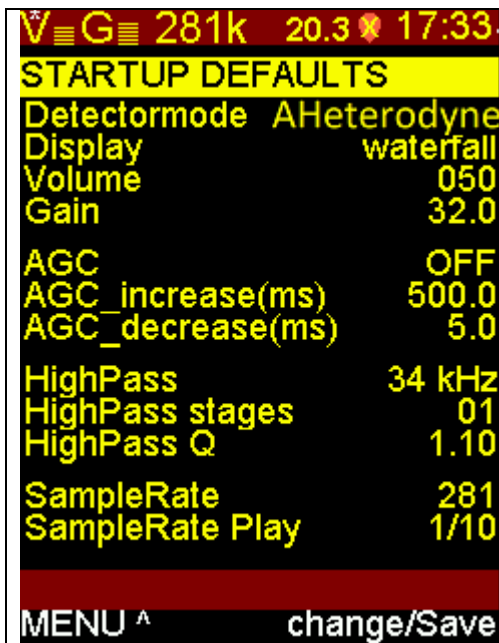
RESET settings:

At startup Settings can be restored to “factory” defaults and or to stored configuration files on an SD card.

To restore to “factory” defaults, keep the L-Button pressed when starting the Teensy Bat. The display will notify the reset to defaults.

To restore the settings to a previously saved configuration file (located in root: TB_V13.cfg) on an SD card press the R-Button during startup.

Teensy Bat Detector: Page 1 – STARTUP DEFAULTS



this shows the defaults

Note about the Q factor:
Q values below or above 1 can also affect frequencies **above** the chosen filter frequency.
For example, a setting of $Q = 0.3$, HighPass = 8kHz and stages = 3 attenuates frequencies up to 30kHz.
Read about filter Q on the internet and test setting before using in the field.

Detectormode:

Signal processing used at power-on.

Options are:

- Heterodyne = HT = heterodyne mode
- AHeterodyne = A-HT = auto heterodyne (default)
- FreqDiv = F-D = frequency division
- Passive = Pass = no processing

Display: Type of graphical signal display.

Waterfall(default) / Horizontal Waterfall (T4.1 only) / Spectrum/ no Graphs.

Volume & Gain: Default sound volume and signal amplification used at startup.

AGC: Automatic gain control ON or OFF.

When on, the gain setting will be used as the maximum gain.

If incoming signal gets too strong, gain will be reduced to prevent saturation. When signal lowers again, gain will progressively increase back to the default value.

AGC_increase: Time in milliseconds before the gain increases while getting back to chosen gain. Default set to 500ms to allow slow recovery.

AGC_decrease: Time in milliseconds between reductions in gain in case of strong signal. Default set to 5 ms to allow a fast reaction to too strong incoming signals.

HighPass: All signals lower than the chosen frequency will be attenuated. The further below from this frequency a signal is, the stronger the attenuation will be. Depending on the Q setting of the HighPass this will also attenuate frequencies above the HighPass-filter.

HighPass Stages (1 to 4) : Strength of the attenuation. One stage of HighPass will give a filter with 12dB attenuation per octave, each additional stage will add 12 dB. The filter therefore becomes steeper.

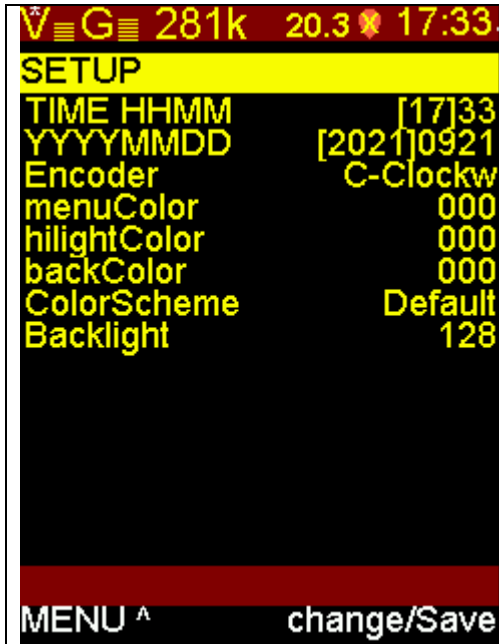
HighPass Q: The Q value sets the shape of the overall filter; a higher Q will make the filter steeper and a lower will attenuate more frequencies above the Filter-frequency.

SampleRate: Number of samples per second * 1000.

Should be set to at least twice the maximum frequency you want to record. For example, to record up to 140kHz, Sample rate should be at least 280 K.

SampleRate Play: Time Expansion slowdown factor used for playback of recordings.

Teensy Bat Detector: Page 2 – SETUP



this shows the defaults

Time / date: Can be used to manually set the current time and date.

These values are automatically set if the optional GPS module is installed and powered.

Setting the time/date is done using a combination of the R-Enc and R-Button. First select time or date.

The part of time/date between [] can be changed using the R-Enc, the position of the [] can be changed by pressing the R-Button.

Encoder: Sets the orientation of the two encoders' rotation (not all encoder models work in the same way). Set it and forget it ... but don't forget to SAVE

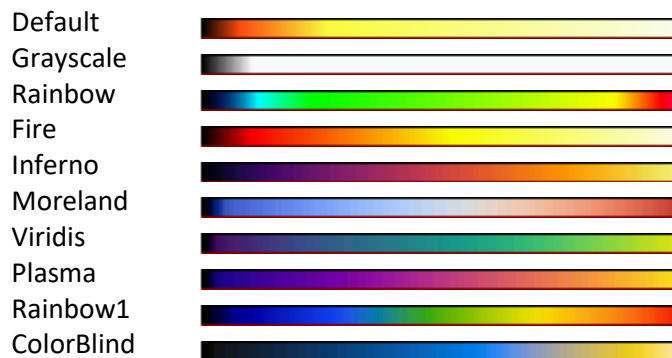
menuColor / hilightColor / backColor:

use this to change the colors used in the interface for text, selected text and backgrounds.

ColorScheme: Different color sets are available for the spectrogram display (see below). When selected the screen will show a preview of the ColorScheme on the bottom.

Backlight (OPTIONAL): Software controlled backlight intensity. This normally is set as low as possible to get a screen that is good readable in the dark and uses less energy. This feature is only present when PWM is enabled to control the brightness of the TFT.

Available color schemes:



Teensy Bat Detector: Page 3 – AUTO RECORDING

V	G	281k	20.3	17:33
AUTO RECORDING				
SampleRate		281		
Gain		32.0		
use AGC		OFF		
Signal Peak above	20 kHz			
Signal Strength above	2000			
max Duration(s) of rec		010		
max Silence(s) in rec		005		
Pause(s) between rec		010		
Pre-buffer (s)		OFF		
use DEEPSLEEP		OFF		
Sleep START		00:00		
Sleep END		00:00		
Display during rec		OFF		
MENU ^A change/Save				

Auto recording mode is used for unattended monitoring.

SampleRate / Gain / Use AGC: These are recording parameters. Work in the same way as their manual recording counterparts.

Signal Peak above / Signal strength above: Threshold levels, recording will only start if both conditions are met.

Max duration(s) of rec: Recording will stop after n seconds, even if signal is still coming in.

Max silence(s) in rec: Recording will stop if there is no signal over threshold for more than n seconds.

Pause(s) between rec: Minimum waiting time before a new record can be started.

Pre-buffer(s) (OPTIONAL only T4.1): Defines how many seconds of audio is stored prior to the actual triggered recording.

Using DEEPSLEEP: Set to ON to allow prolonged unattended auto recording without spending too much battery. The Teensy will be put to deep sleep mode (minimal energy use) and will wake up to start Auto Recording after the SLEEP END time.

Sleep START: Time at which the device will stop listening and enter deep sleep.

Sleep END: Time at which the device will wake up and start monitoring sounds.

Display during rec: Set to no to minimize energy use. Device will have to be switched off and back on again to power the display back on. THIS IS OPTIONAL and only present if PWM is available to control the TFT.

Teensy Bat Detector: using the pre-buffer on for recording (Teensy 4.1 only)

The teensy board 4.1 can be upgraded during assembly with one or two PS ram chips, providing 8 or 16Mb of additional memory.

This memory can then be used by the code to continuously record incoming sounds into an endless ring buffer. Once the buffer is full the Teensy Bat will continue writing into the buffer from the starting position again, overwriting the oldest audio first.

If enabled (when compiling), this ring buffer is by default set to provide up to 4.5 seconds of pre-recording. This setting can be changed by the user. In theory a 16Mb PSRAM can be used to collect nearly 30 seconds of audio at 281K sampling. Currently the code is only using part of the available PSRAM for this purpose. The defaults are 10000 sample-blocks (each 128 samples) for the ring buffer and 2000 sample-blocks (of 128) for the buffer during recording.

When the recording is manually triggered (by pressing the L-Button), the past 4.5 seconds of sound, present in the ring buffer, are directly written to the SD card, but the recording starts also directly and will continue until the L-Button is pressed again.

Then the ring buffer starts to fill up again, and so on.

This enables the user to actively listen to incoming sounds, and decide to record them if they are interesting. When the recording starts, the recorded file will always contain the sound that triggered the user to press the recording button.

These 4.5 seconds are more than enough to compensate for human reaction time, have some time to decide whether to record or not, and in the end get a complete recording, including the sounds made by the animal as it was approaching, before it was even audible.

The ring buffer can also be used with auto recording, by default it will not add 4.5 seconds to each auto-recording but a user-set amount (see settings).

That way, there will be a better chance of getting sounds that were emitted by the approaching animal, but not yet strong enough to trigger the recording.

Teensy Bat Detector: Recording and playback.

Memory card

When recording, files are stored to a micro-SD card. This micro-SD card needs to be formatted as FAT32 . All SDHC (up to 32GB) cards usually are formatted as FAT32, the larger SDXC card however are formatted as XFAT. You can use the SDXC cards but you have to format these as FAT32, the tool `guiformat.exe` from Ridgecorp is an easy tool to do this.

Files

Files are stored in folders of the creation date, so for every day you one or more recordings a new folder is created. In this folder the files are stored with a long filename containing the creation date and creation time. Be sure you have the time and date set correctly. If you are recording during a change for daylight saving time the files could get a bit messed up. Please be aware of that.

Start recording Obviously you can only use this function when an SD card is present. You need to place the card before you switch the detector on.

You can start a recording by simply pressing L-Push. In the display the detector will show RECORDING. The waterfall and detection mode will continue to work. The low, peak and high frequencies however will not be shown. The high and low values actually are the points where the signal strength falls below 25% of the peak signal. If you have a closer look these do not represent the actual lowest and highest frequencies, these actually are even a bit lower and higher.

If you press L-Push again during recording, recording is stopped.

Automatic recording

If you turn L-Enc to autorecord and press L-Enc autorecord will start with the parameters you have chosen in the Auto record settings menu. It is wise to experiment and have the display on so you can see what is happening.

If autorecord is initiated the detector will be waiting for a suitable signal. The L-Push button will show "push to stop" pressing this button will stop the autorecord function. During a recording the display will show auto record at the top and just below that you can see "# x" where x is the sequential number of the recording in that autorecord session.

Playback

With the function PLAY we can play back the files that we have recorded before.

If play is chosen, we see some file information in the display. The top line shows the chosen folder, below that is the duration of the recording and the sample rate. The bottom line of these three shows the full file name.

On the top of the display we can see the power spectrum, the detector stores a power spectrum in every wav file it records. This can help find the odd bat in a whole bunch of recordings. (When opening a wav file from another device or an edited wav file you do not have this information.)

With L-Enc we can select another file in the selected folder. With L-Push we can start playing the file. When we need to change to another folder we can press L-Enc "ROOTDIR" which brings us to the root of the filesystem. By turning L-Enc we can select the folder and pressing L-Push selects that folder.

R-Enc can be used to change the playback speed, standard the speed is 1/10 of the original speed. The setting "Direct" will play the file as if you receive it. You can listen to the full speed recording in any other mode you like.

During playback the waterfall is also functioning as well as the power spectrum and high/peak/low indicator.

To leave the playback function press L-Push "STOP" (If a file was playing) and press L-Enc twice "ROOTDIR^" / "MENU^" to get back to the main screen.